



# SOLUTION CONTROL SYSTEMS MV Solutions



15835 145 Ave Edmonton AB T6V 0H8 • (780) 485 9944  
info@solutioncontrols.ca • solutioncontrols.ca



***BUILT FAST.  
BUILT RIGHT.***

***BUILT FAST.***  
***BUILT RIGHT.***

## ***OUR MISSION***

Solution Control Systems is committed to quick turnarounds on our MV solutions while focusing on reliability, value, and details.

# **SOLUTIONS**

Solution Control Systems' MV Solutions lineup ranges from custom metal-enclosed/metal-clad switchgear to motor systems controls to e-houses, and everything in between - with the added benefit of fast turnarounds.



### **MV Switchgear**

5 - 27kV, upto 4,000A, upto 63kA interruption



### **LV Switchgear**

480 - 600V, upto 10,000A, upto 100kA interruption



### **MV Motor Controllers**

DOL Starters, Soft Starters, VFDs up to 15kV & 15000HP



### **Electrical Buildings**

MV gear mounted buildings & skids with essential electrical

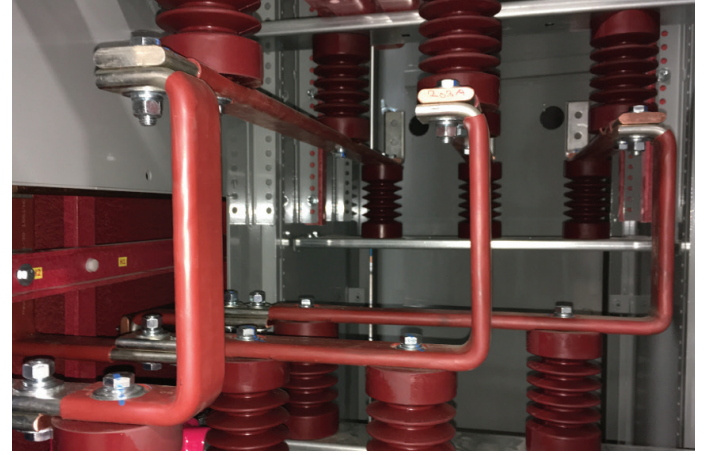
# SERVICES

Solution Control Systems provides services to compliment our MV Solutions and provide value to our customers.



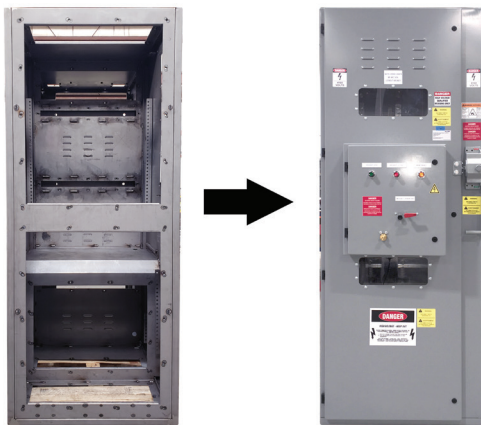
## Enclosure Design and Fab

Nema 1/12/3R enclosures designed & fabricated in house



## Busbar Design and Bending

Custom fabrication including cutting, bending, punching and insulation



## Retrofit and Upgrade

Old equipment disassembled, refinished, and upgraded with new gear



## Protection and Monitoring

Design, assemble and test protection/monitoring circuits

## OUR PROMISE

Reliable Solutions  
Flexible Designs  
Fast Turnarounds  
We go the extra mile

## ABOUT US

Solution Control Systems has a team of electrical and mechanical designers with a demonstrated history of successful project delivery in industrial controls and medium voltage solutions.



# SOLUTION CONTROL SYSTEMS

15835 145 Ave Edmonton AB T6V 0H8

[info@solutioncontrols.ca](mailto:info@solutioncontrols.ca)

[solutioncontrols.ca](http://solutioncontrols.ca)

(780) 485 9944